

# Quick Start Guide

For today's financial professional.  
Your new desktop has arrived.

## Contents:

Install and sign in.....	2
Basic navigation .....	4
Use your floating workspace .....	7
Monitor your portfolios.....	12
Charting and technical analysis.....	14
Eikon Messenger .....	16
Eikon – Microsoft Office .....	18

# Install and sign in

## I. Install the application

### Does my computer meet the requirements for Eikon?

1. Go to <https://customers.thomsonreuters.com/Eikon>
2. Click on **Run the Test** under System and Network Test.
3. Follow the on-screen instructions to run System Test.

### How do I get my Eikon account?

1. Your company's Market Data team or Refinitiv Account Manager requests an Eikon ID on your behalf.
2. You, or your Market Data team, will receive a Welcome email from Eikon.
3. Click the link in the Welcome email to activate your account.

### How do I install Eikon?

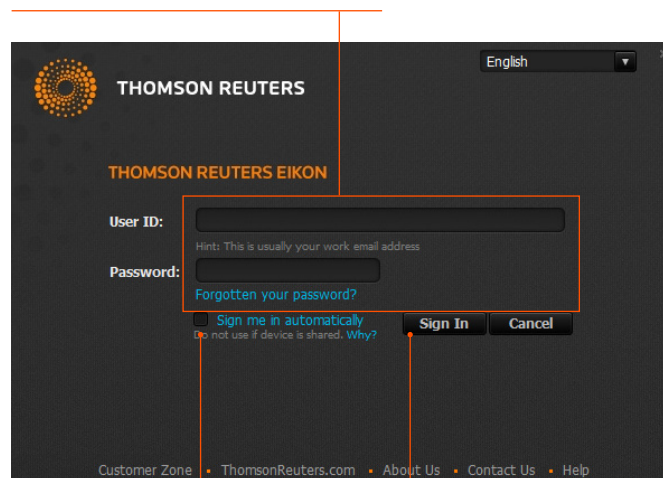
After checking that your computer meets the requirements and activating your account, you are ready to install Eikon:

1. Go to <https://customers.thomsonreuters.com/Eikon/>
2. Click **Sign in & Download**.
3. Follow the on-screen instructions to install Eikon.

## II. Sign in

### On your desktop

1. Click **Start > Programs > Thomson Reuters** and choose **Eikon**.
2. Type your user ID and password.



3. Select **Sign me in automatically** to avoid signing in the next time you start the application.
4. Click **Sign In**.

### On your mobile device

The single sign-on (SSO) feature with single exchange fees lets you access Eikon on iOS, Android™, and BlackBerry® devices.

Download the Universal App for iPhone® and iPad® from the Apple® App Store®. For BlackBerry, go to BlackBerry World®. For Android, go to the Google Play™ App Store.

For eLearning, go to

<http://training.thomsonreuters.com/eikon/mobile-solutions>

### On the Web

You can now access key Eikon news and data on the Web, without having to download an application. Just go to <http://eikon.thomsonreuters.com/login> and use your user ID and password.

## III. Contact support

### If you cannot sign in

Unable to sign in? The most likely cause is an incorrect password or no Internet connection.


Should the problem continue, contact:

1. Your local IT or Market Data team.
2. Refinitiv:
  - Content & Functionality: 0800 44 20 00
  - Technical: 0800 44 30 00
  - Eikon Messenger: “Support” button at the top

After logging in, you can always access help by pressing **F1** or using **Help** in the app menu.



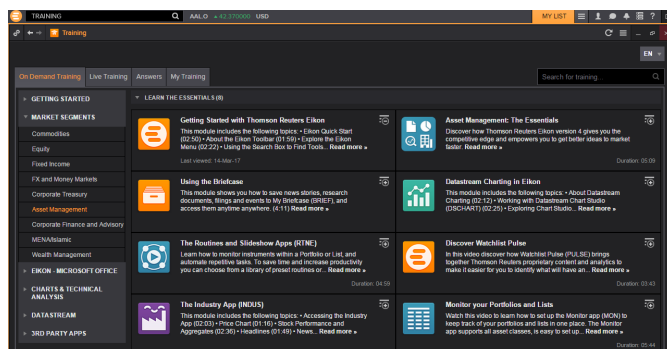
## Get more help

- Click  in the top right of your toolbar to find out what's new in Eikon.

## Get training

Type **TRAINING** into the Search box to open the Training App:

- View on-demand video tutorials to help you get the most out of Eikon
- Learn the basics so you can get up and running quickly
- Explore learning by segment to ensure you are making the most of the tools available for your market
- Bookmark training so you can complete it at a time convenient to you



## IV. Reset password

If you have forgotten your password, open Eikon and click **Forgotten your password?** on the sign-in pop-up. This is located below the Password box.

## V. Customize your profile

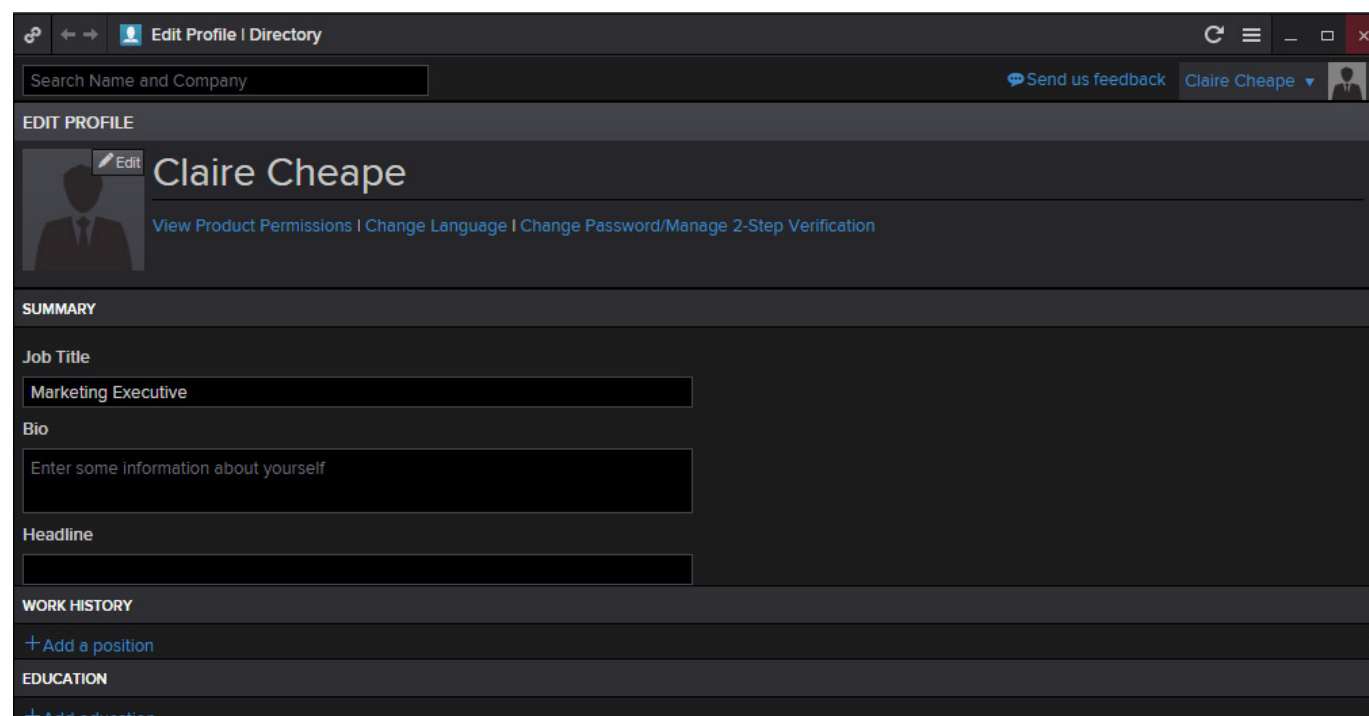
### Create your profile

When you sign in for the first time, Eikon prompts you to customize your profile. Be sure to fill in **Job Functions** and **Asset Classes**; this information is used to suggest the features and apps most appropriate for your role.

You can:


- Import your LinkedIn® profile
- Add a photo
- Fill in your work history and education
- Give details about your job role in **General Info**
- Enter contact details

This information appears in the Refinitiv financial directory and improves the results of people-related searches.



### Update your profile

You can edit your profile information at any time.

Go to  > **Settings** > **Profile** to reopen your profile page and make your changes.

# Basic navigation

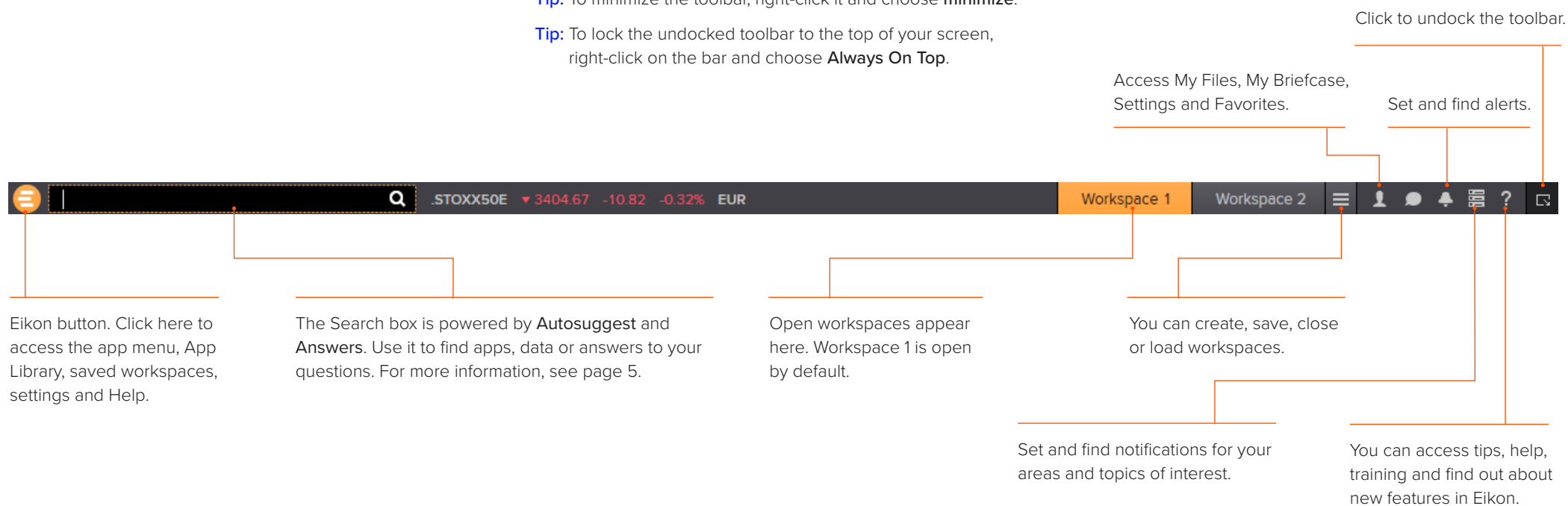
## I. Get to know the toolbar

Immediately after logging in, the toolbar appears at the top of your screen.

**Tip:** To move the toolbar, just right-click it and choose **Undock**, then drag it to a new position.

**Tip:** To minimize the toolbar, right-click it and choose **minimize**.

**Tip:** To lock the undocked toolbar to the top of your screen, right-click on the bar and choose **Always On Top**.



For eLearning, type **Training** into the Eikon Search box, select **Training for Eikon**, choose **Getting Started** and **Learn the Basics**.

## II. Find apps and define settings

Click to open the app menu.

**My Apps** features apps for your specific asset class. You can add, remove or rearrange apps in this menu.

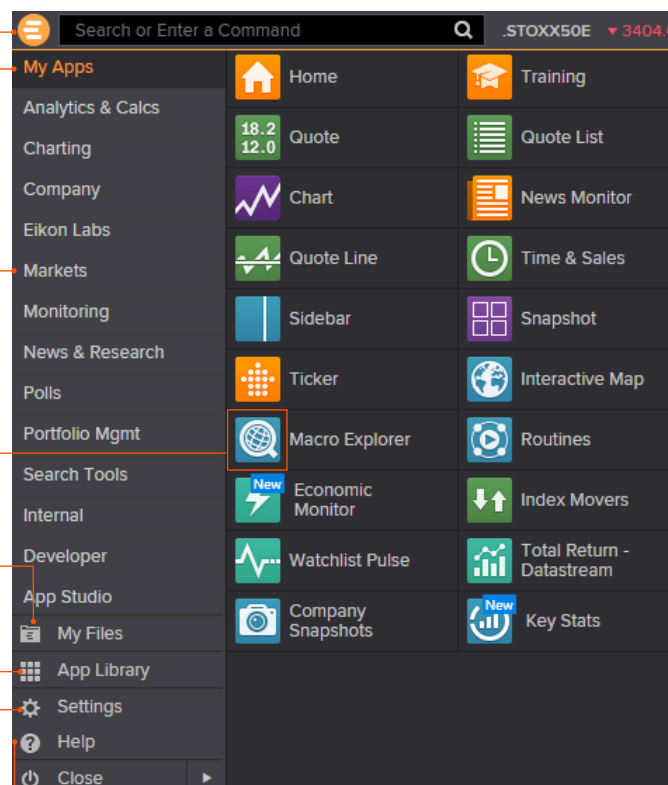
Other apps are displayed by category.

Click any app to open it.

**My Files** holds all your saved workspaces and layouts.

The **App Library** is a searchable database of all apps.

Click **Settings** to define global options, trading settings and more.



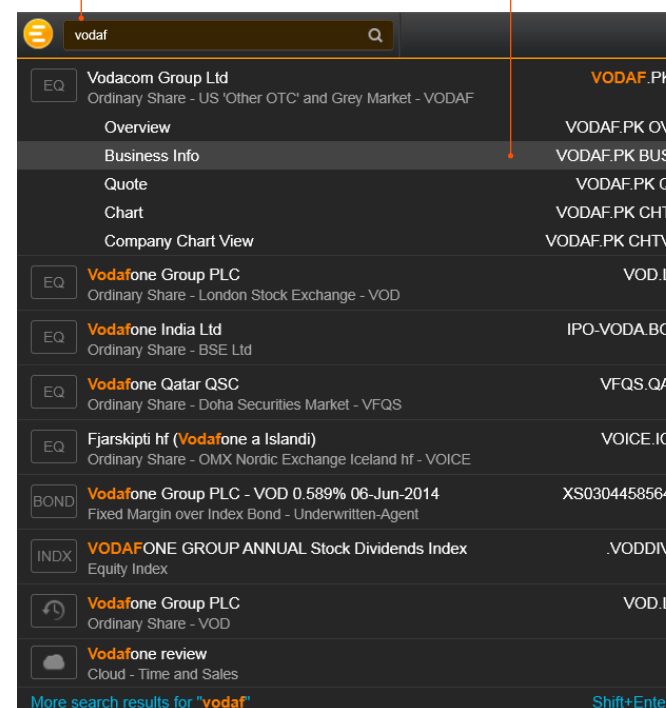
Click **Help** to access online help, to contact us, to find out what's new, and other support options.

## III. Search for content and get Answers

### Search box: a starting point for your workflow

The search box is your starting point to navigate anywhere. Just start typing and Autosuggest will propose results.

1. Start typing **Vodafone** in the Search box.
2. Autosuggest displays results.



3. Click a result to load content. For example, you can open the Chart App with data for Vodafone already loaded.

4. If you don't find what you are looking for, press **Shift+Enter** or click here to run an advanced search.

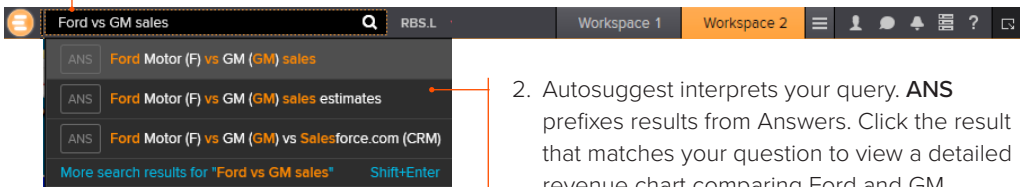
### Sample searches

Company names or common abbreviations	Microsoft, Vodafone, ibm
Descriptive terms	Comex copper, vodafone common stock
Standard industry codes	Ticker, ISIN, Cusip, Sedol, WERT
Specific and partial codes	US4592200HJ3, MSFT, USTB
Ticker, coupon and maturity	VOD >7.5%, Vodafone 2015
Country names for country guides	France, UK, Japan
News searches on specific instruments or topics	IBM news, China news, UST news

## Answers: ask your questions in natural language

Type a query using natural language. Eikon Answers will appear at the top of the results.

- For example, you want to compare recent top-line trends for Ford and GM. Type **Ford vs GM sales**.



The screenshot shows the Eikon search bar with the query "Ford vs GM sales". Below the search bar, a list of suggested answers is displayed:

- ANS Ford Motor (F) vs GM (GM) sales
- ANS Ford Motor (F) vs GM (GM) sales estimates
- ANS Ford Motor (F) vs GM (GM) vs Salesforce.com (CRM)

At the bottom of the list, there is a link: "More search results for 'Ford vs GM sales'" and a "Shift+Enter" button.

- Autosuggest interprets your query. **ANS** prefixes results from Answers. Click the result that matches your question to view a detailed revenue chart comparing Ford and GM.

**Tip:** You can find answers to frequently asked questions. Start typing How do I ... and you will see FAQs in the Search results.

## Sample Answers queries

[Ford vs GM sales 2000 – 2016](#)

[Google EBITDA estimate](#)

[French tech companies](#)

For more help and to see examples, type **ANSWERS** in the Search box and choose the top result.

## IV. Navigating the Eikon homepage

### Explore Eikon assets and related content

Type **Home** into the App Library or the Search box to find the Homepage app.

Navigate through news and features via the top or left-hand content menu.



The screenshot shows the Eikon homepage with a dark theme. The top navigation bar includes links for HOME, ASSET CLASSES, COUNTRIES, INDUSTRIES, NEWS AND RESEARCH, MY EIKON, REUTERS INSIDER, TRADING, and FINANCIAL INSTITUTIONS. The left-hand menu lists various asset classes and research tools. The main content area features a "What's new in Thomson Reuters Eikon?" section with a "Click '?' icon on the toolbar and 'What's New' to discover the latest features" message. Below this, there are sections for "FIXED INCOME", "CENTRAL BANKS & GLOBAL ECONOMY", and "EMERGING MARKETS". The right-hand side displays "KEY RATES" and "BENCHMARK BONDS" with tables showing yields and net changes. The bottom of the page shows "CROSS MARKETS" and "INTEREST RATE SWAPS".

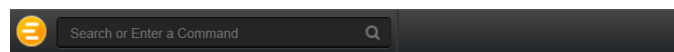
The homepage is personalized to your profile.

# Use your floating workspace

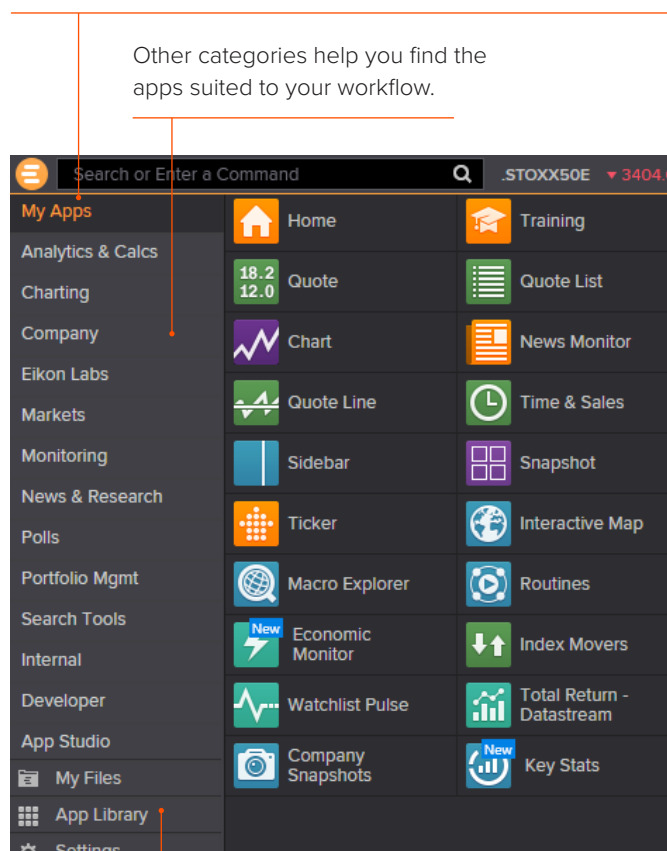
Eikon features a floating workspace that displays multiple apps of your choosing. This flexible format means you are not restricted to one size or shape, and can customize screen real estate to suit your needs. With just a few clicks, you can:

- Add the apps you want
- Size them to meet your requirements
- Group them together so that they move as a single entity
- Stack them to create tabbed windows so that you can flip back and forth
- Arrange them around other applications such as Microsoft® Excel® or Outlook®
- Link them together so that they share data

## I. Explore apps for your asset class



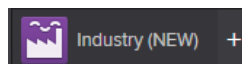
**My Apps** gives you one-click access to the apps most frequently used in your asset class. For example, default apps for an equities trader include Quote List, Option Watch, and Time & Sales App.



Click **App Library** to view the full list of available apps.

Other categories help you find the apps suited to your workflow.

**Tip:** You can rearrange apps in **My Apps** by dragging the icons and dropping them to a new location. You can also add or remove apps by clicking on the + beside the app name.

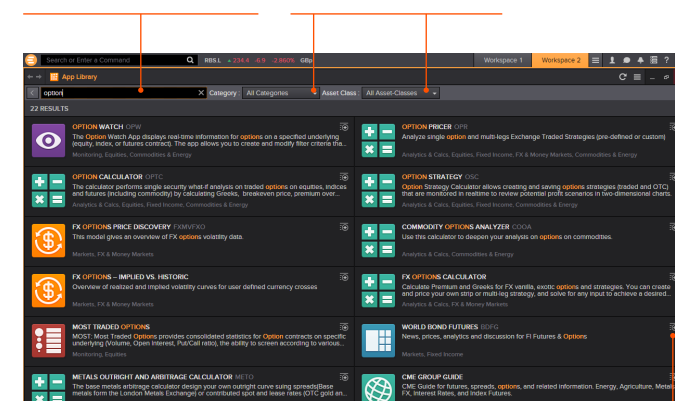


## II. Browse the App Library

Go to App Library within the app menu. 

Begin typing an app name in the search box. Results appear below.

Choose a category or asset class to narrow down your results.



Click + to add an app to **My Apps** for faster access.

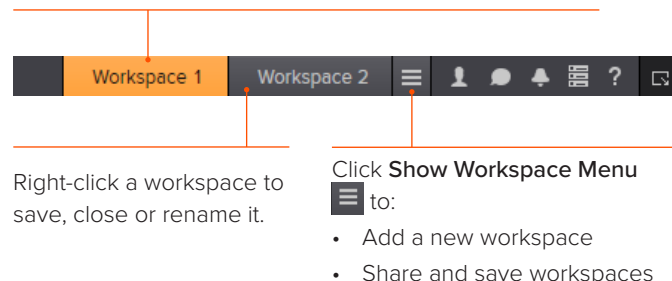
**Tip:** Use keyboard shortcuts to quickly access:

F1 – Help                      F9 – News  
F4 – Quote                    F10 – Charts

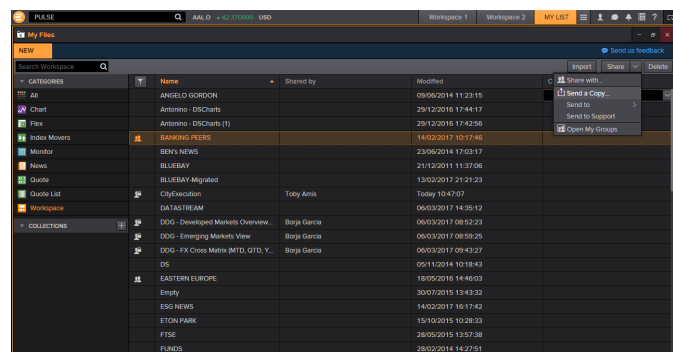
### III. Set up your workspace

#### Create a new workspace

Click a workspace name to make it the active workspace. You can have up to ten workspaces open at any time.



**Tip:** You can share workspaces using Eikon Messenger by clicking on the workspace menu > **open workspaces** > **see more workspaces** > click on any workspace > click the **share** button > click **send a copy** > type the name of recipient and send.



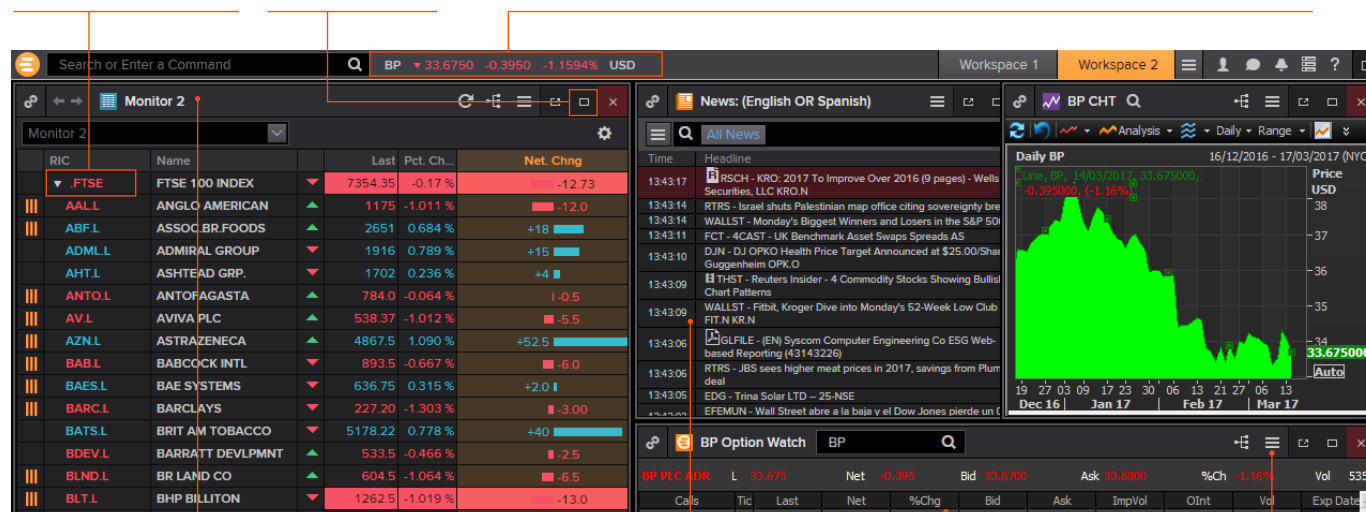
#### Add apps to your workspace

When you open an app by selecting it in the app menu, the App Library or through the Search box, it automatically becomes part of your active workspace.

This example includes a Monitor, Option Watch, News Monitor and a chart.

Type in **FTSE 100**, click the drop-down triangle to see all constituents. Group and ungroup the apps.

The active symbol (in this case, Renault <RENA.PA>) is the most recent financial instrument you have focused on. When you add an app, it automatically displays data for the active symbol.



Click an app title bar to move the app. Click and slowly drag an app until its frame touches another app: the two apps group together, and you can move them around as a single entity.

Add News Monitor to your workspace to get:

- The latest market-moving news
- Historical news archives
- Feature-rich, intuitive user interface

Resize an app as you would any other window: just click the frame and drag to the new size.

Use auto-stacking so that new apps open automatically as tabs in the same window. This saves screen real estate. Within the app, go to > **View > Auto Stack Window** to turn auto-stacking on.

**Tip:** In the monitor, add any financial instrument. i.e., 10Y Benchmark bond.


For more help, press **F1** when in the app.

For eLearning, type **Training** into the Eikon Search box, select **Training for Eikon** app, choose **Getting Started**, select **News** and click **The News Monitor App**.

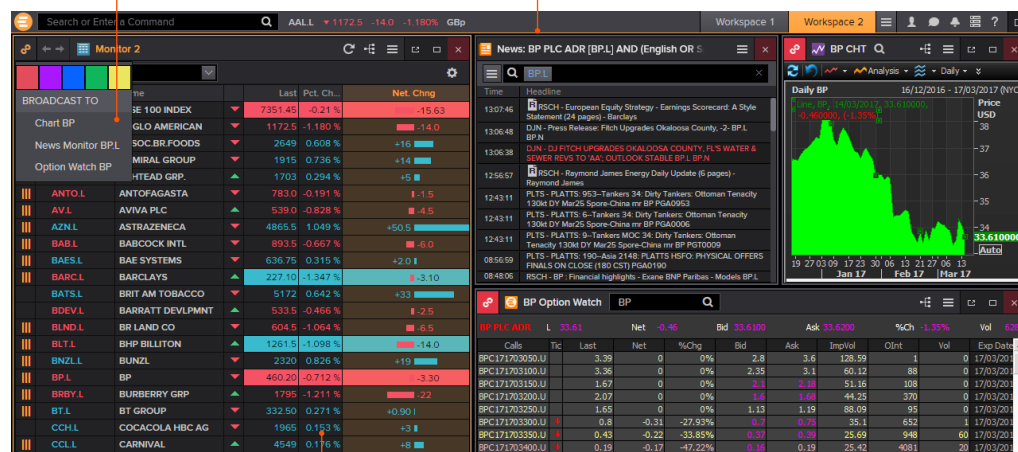


## IV. Link apps together and access related information

You can link apps together so that they share the content of your chosen instruments. Color-coded apps “tune in” to the same datastream.

1. This example includes a Monitor, Option watch, News Monitor and a chart.
2. In the top left of each app, click **Link Channel**  to choose a color.

Choose whichever color you prefer.



3. Now that the apps are linked, click any instrument on the Monitor; all other apps will automatically display content for the new instrument.

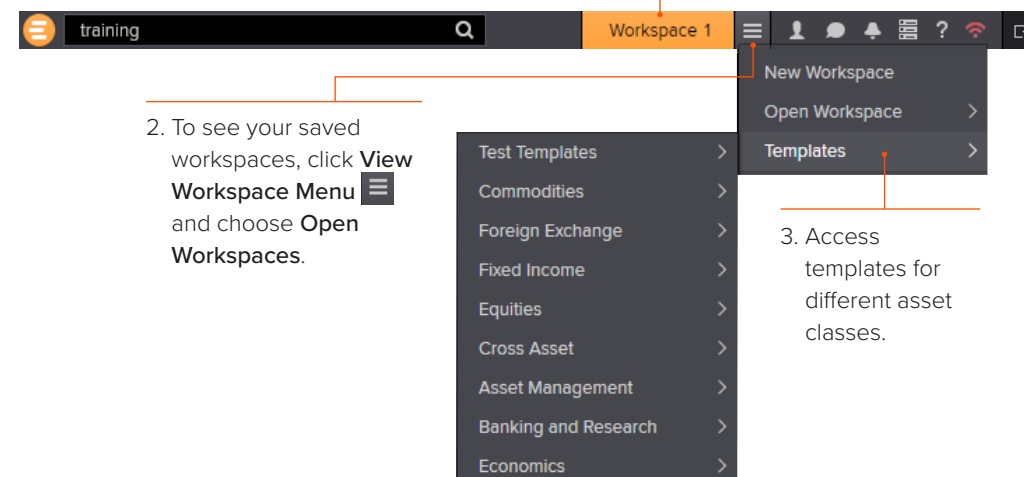
**Tip:** Right-click on any instrument to access any related information.


For eLearning, type **Training** into the Eikon Search box, select **Training for Eikon**, choose **Getting Started**, select **Learn the Basics** and click **Managing the Eikon Workspace**.

## V. Save or share your workspace

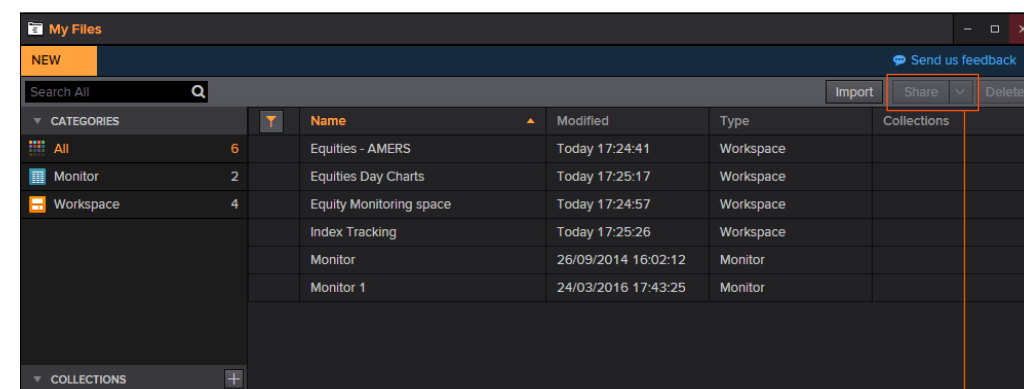
After creating your workspace, you can save it for later use or share it with colleagues. Just right-click the workspace tab in the application toolbar, and choose **Save**. You will also be prompted to save any unsaved workspace changes when you close Eikon.

1. Right-click the workspace tab and choose **Save**.



2. To see your saved workspaces, click **View Workspace Menu**  and choose **Open Workspaces**.

3. Access templates for different asset classes.



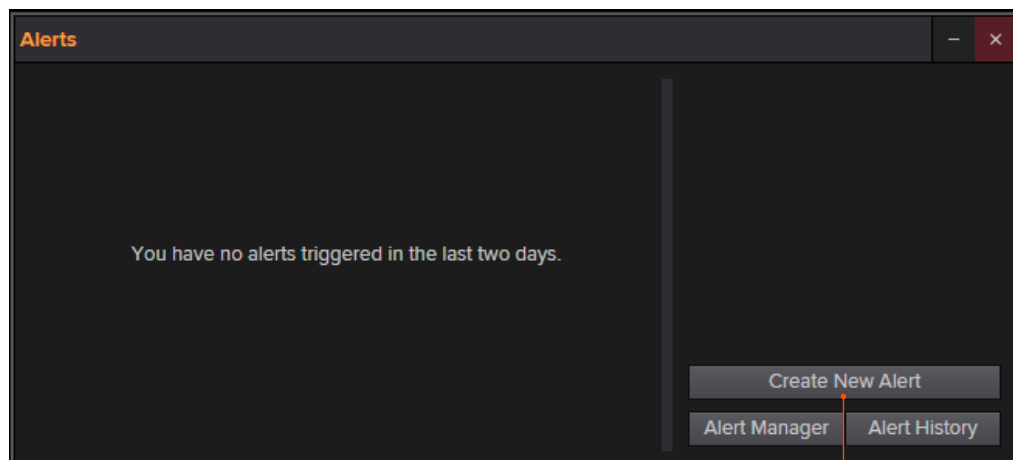
4. View your saved workspaces and layouts. You can share content with your colleagues or other Messenger contacts – just click **Share**.

## VI. Get alerts for market-moving events

Get informed immediately of market-moving information with Alerts.



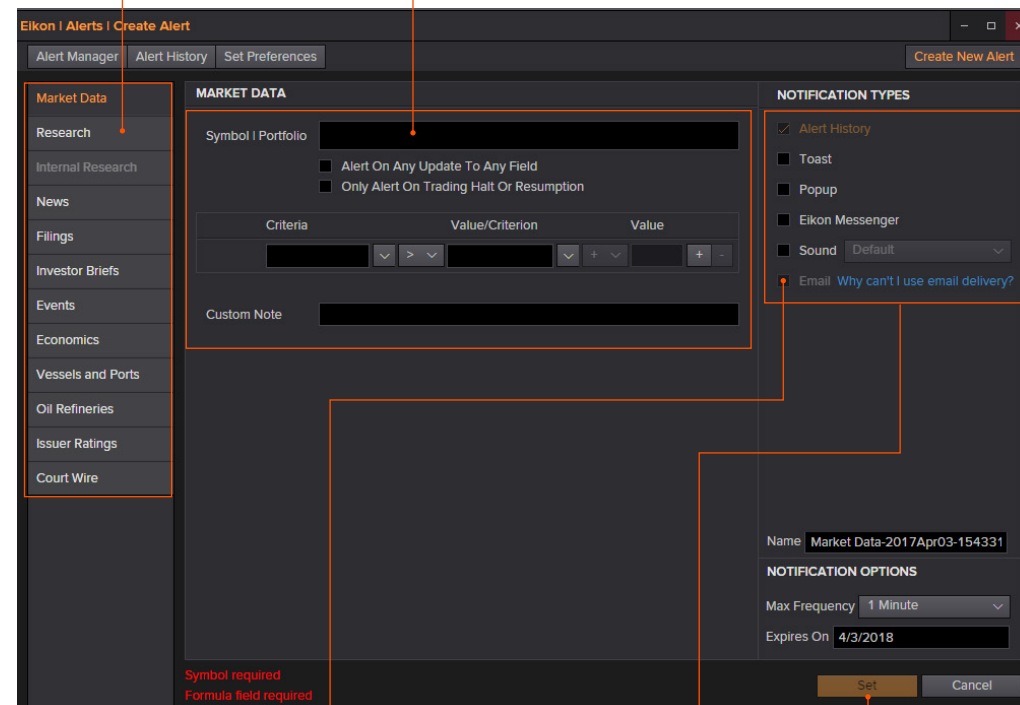
1. Click  in the top right of the toolbar to open Alerts.



2. Click **Create New Alert**.

3. Choose the type of data or event to trigger the alert.

4. Fill in the alert criteria. For example, you can receive an alert when the instrument price hits a certain threshold. You can easily combine criteria, and Autosuggest helps you find the right instrument quickly.



5. Sign up for email alerts by validating your email address in **Set Preferences** tab.


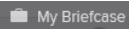
6. Choose how you want to receive alerts.

7. Click **Set** to activate your alerts.

**Tip:** You can set alerts directly from other apps. Just right-click the instrument you are interested in and choose **Set Alert**.

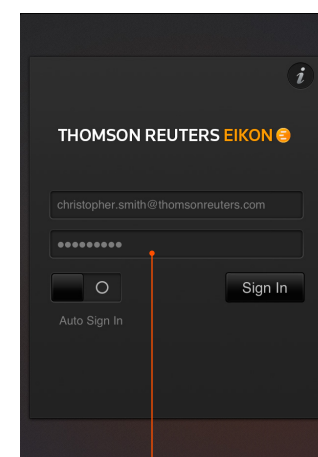
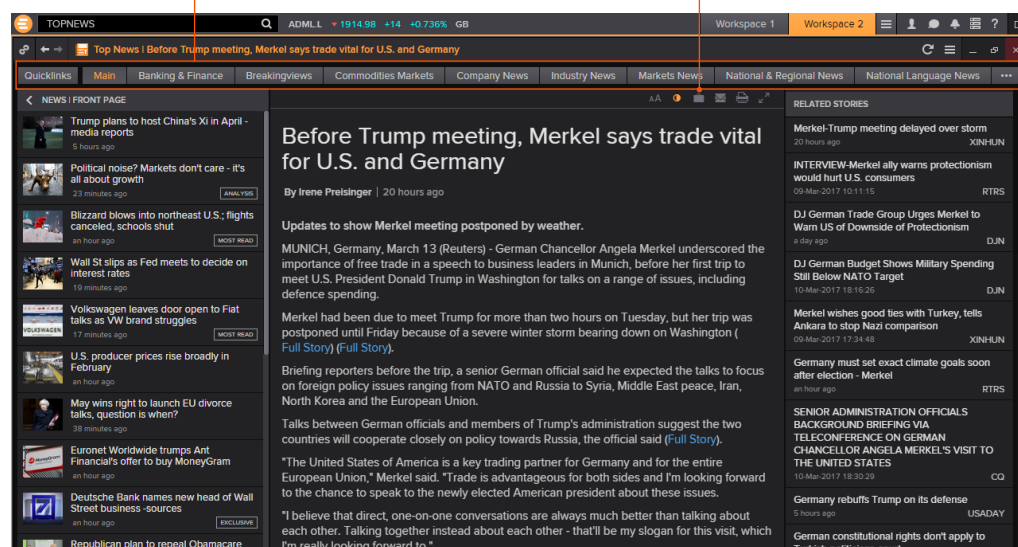
For eLearning, type **Training** into the Eikon Search box, select **Training for Eikon**, choose **Getting Started**, select **Price Discovery** and click **Creating and Managing Alerts**.

## VII. Read news and broker reports offline

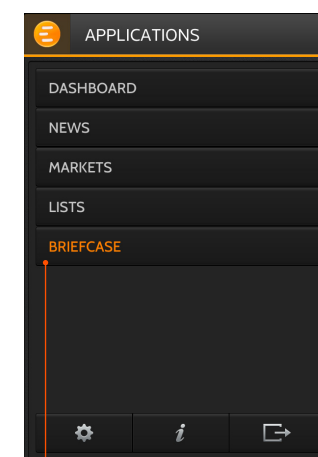
With **My Briefcase**, you can collect news and documents and read them later, either on your desktop application or from your mobile device, even when you are offline. You can open **My Briefcase** by clicking  in the top right of your toolbar and click **My Briefcase** .

1. Open an app and display filings, research, events or news.  
For example, type **TOPNEWS** in the search bar to access Top News page; click on any story.

2. Use the top menu to navigate through topics.
3. Click **Add to Briefcase**.



4. Sign into your mobile device.



5. Go to **Briefcase** in the **Applications** menu to find the article you saved.

**Tip:** Use the back button to navigate back to the main Top News page from a story.

For eLearning, type **Training** into the Search box, select **Training for Eikon**, choose **Getting Started**, select **News** and click **Using the Briefcase**.





## II. Follow news that affects your portfolio or monitor

News Discovery offers different insight into NewsWires, Global Press and Reuters Top News through data visualization.

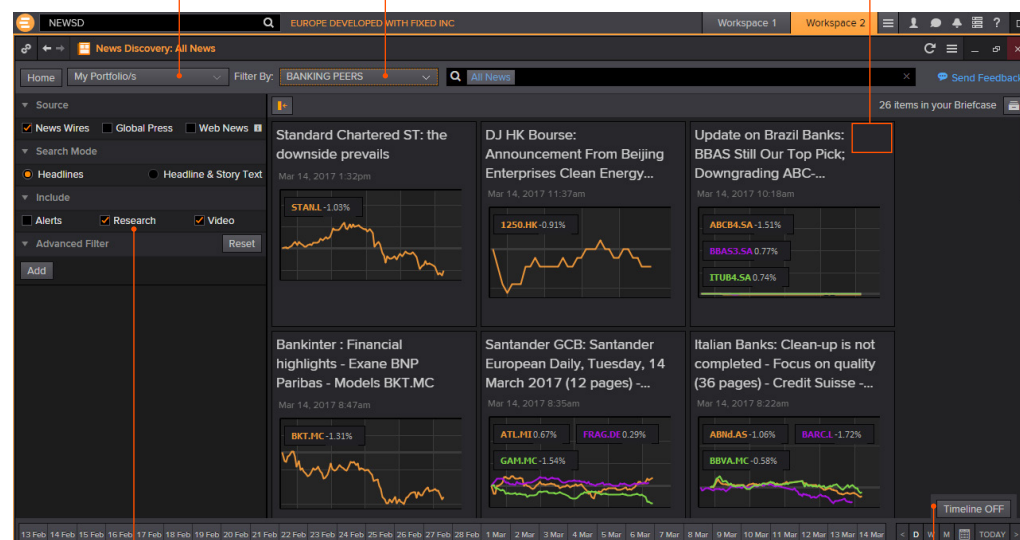
- Get streaming and historical news enhanced by charts, videos, tweets and more
- Charts and story snippets in the headline dashboard tell you the crux of the story at a glance
- View news on the companies in your portfolios
- Filter by story sentiment (NewsWires only), or by date and time
- Add advanced filters and save them just as you do in News Monitor
- Create filters, order by date/time or sentiment or simply view news for the current day

News Discovery is available in the **News & Research** app menu or by typing **NEWSD** in the Search box.

Choose how you want to filter news. In this example, let's filter by portfolio.

Select the portfolio you want. All news articles related to instruments in your portfolio are displayed.

Hover over the top right of an article to display the Briefcase icon. Click **Add to Briefcase** to save your article so that you can read it on the go from your mobile device or Web browser.



Select the news sources you require, and add advanced filters in this area.

Use the Timeline toggle button to display news in reverse chronological order or based on the date and time criteria you have chosen.

## III. Watch the markets with Monitor

Monitor lets you watch instruments and multiple portfolios. You can create and modify your Monitor quickly and easily, choosing data fields from the Eikon database and sharing your list with colleagues.

You will find Monitor in the **Monitoring** app menu.


Remember, you can open an app from the app menu, or find it using the Search box in the App Library.

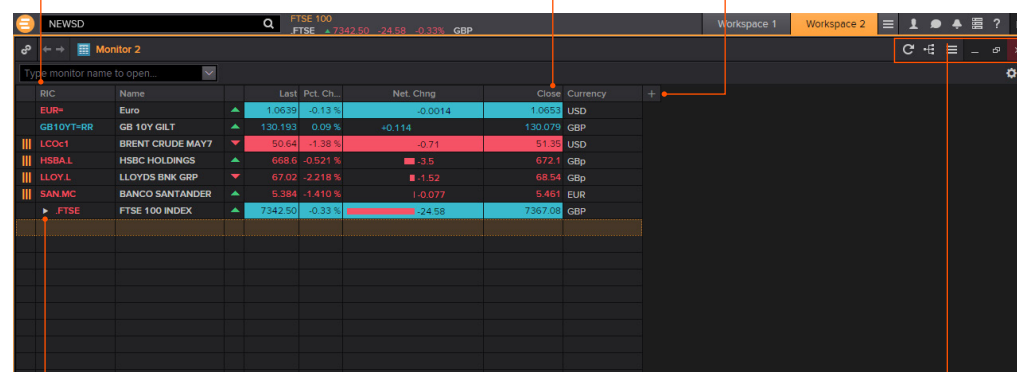
To create your instruments, launch Monitor and just start typing. Enter ticker symbols or type a company name and choose from Autosuggest.

Press **Enter** to go to the next line, **Delete** to delete a row, **Insert** to add one, **Ctrl-z** to undo an action or **Ctrl-y** to redo one.

Right-click a header to sort data or add columns.

Also use the right-click menu to access display preferences.

You can create multiple Monitor lists. The app saves your changes automatically. To access saved lists or to rename lists, click the app menu  and choose **File > Open** or **Rename**.



For indices, you can expand or contract the list of constituents by clicking the gray arrow.

Double-click a header name to change the data field. Autosuggest helps you find the Refinitiv data you are looking for.

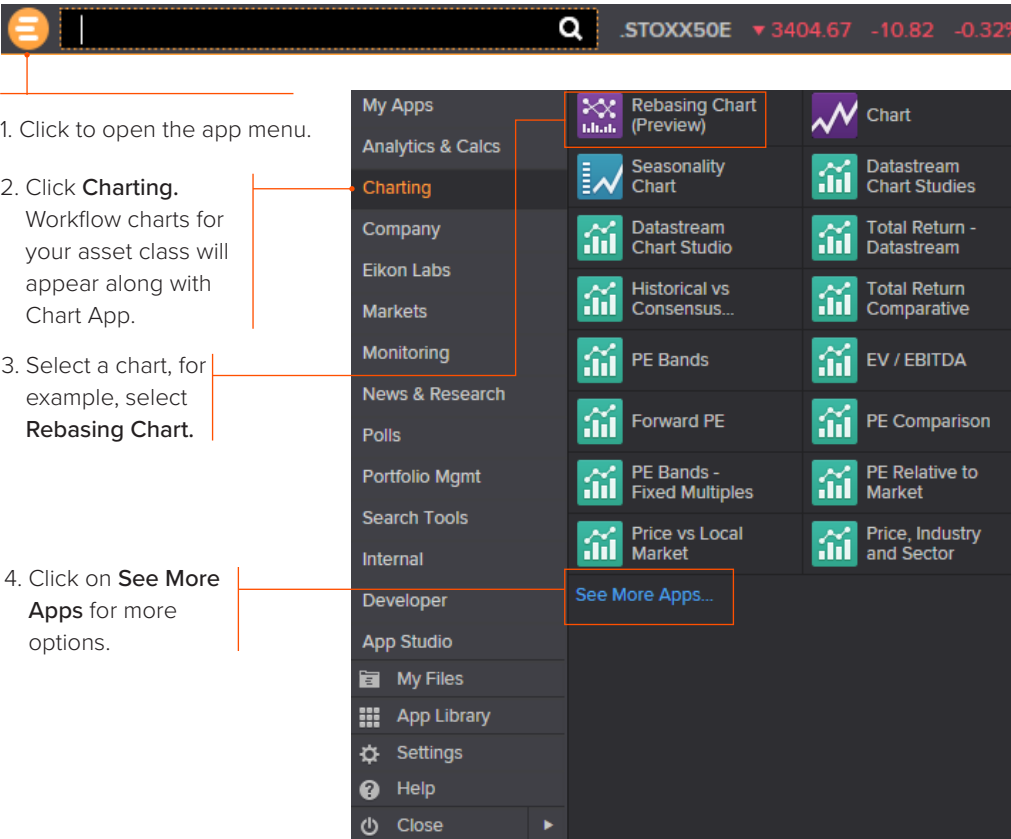
For eLearning, type **Training** into the Eikon Search bar, select **Training for Eikon**, choose **Market Segments**, select **Asset Management**, click **Monitor your Portfolios and Lists**.

For more help, press **F1** in the Monitor app.

# Charting and technical analysis

## I. Use a workflow chart

Workflow charts are predefined charts for various asset classes. You can find them under **Charting**.



1. Click to open the app menu.

2. Click **Charting**.  
Workflow charts for your asset class will appear along with Chart App.

3. Select a chart, for example, select **Rebasing Chart**.

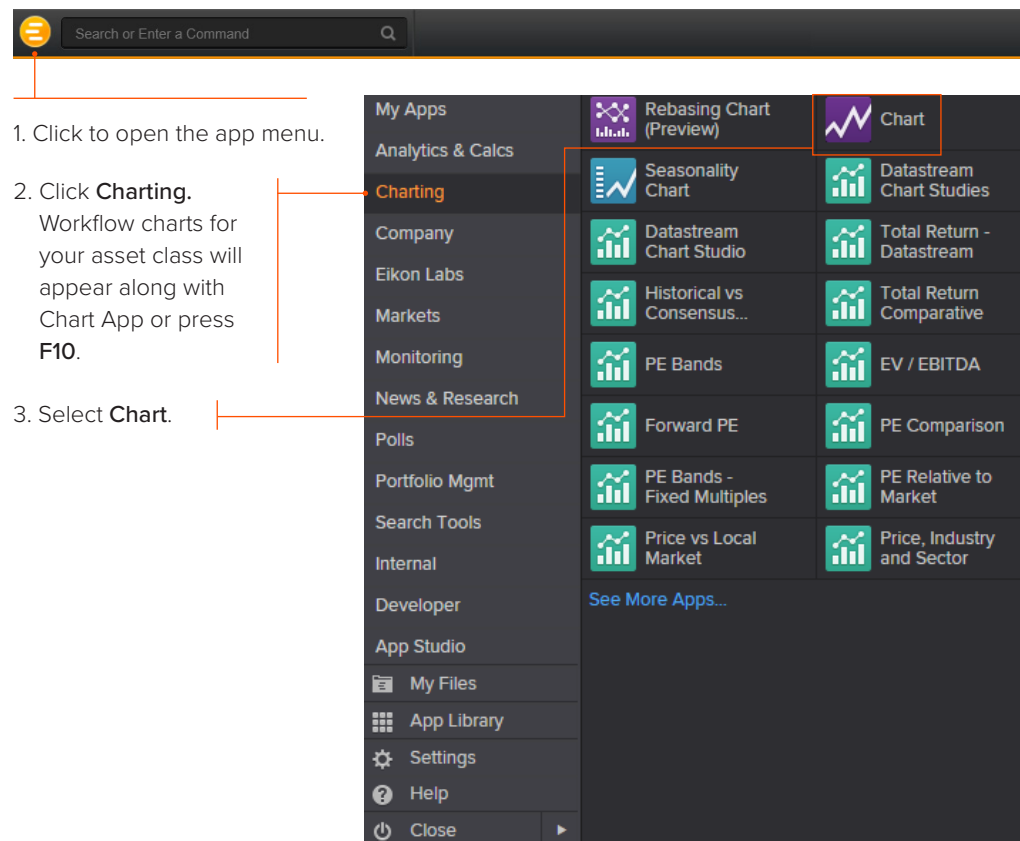
4. Click on **See More Apps** for more options.

4. Fill in the instrument, analysis parameters and other settings.



## II. Create a custom chart in Chart App

Chart App is a powerful, flexible tool for technical analysis. Build your analysis from scratch and configure it to fit your needs.



1. Click to open the app menu.

2. Click **Charting**.  
Workflow charts for your asset class will appear along with Chart App or press **F10**.

3. Select **Chart**.

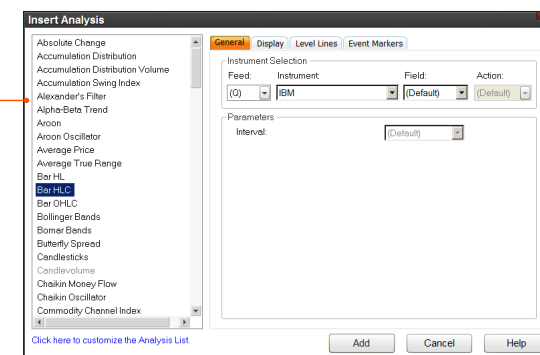
For eLearning, type **Training** into the Eikon Search bar, select **Training for Eikon**, choose **Getting Started**, select **Charting** and click **Getting Started with The Chart App**.

4. Type an instrument code and press **Enter**.

5. Use toolbar buttons to adjust your chart range, interval and line types. Click **Analysis** to add a new analysis.



6. In the **Insert Analysis** dialog box, select an analysis and click **Add** to insert it. To find out more about an analysis, select it and press **F1** to open online help.



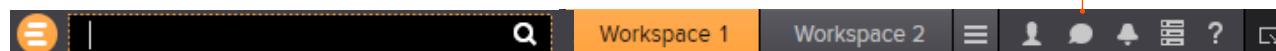
**Tip:** To edit your chart, just click any label and choose a new setting from the drop-down box that appears.

For more help, press **F1** when in the Chart App.

# Eikon Messenger

## I. Use Eikon Messenger

Click  on the toolbar to open Messenger.

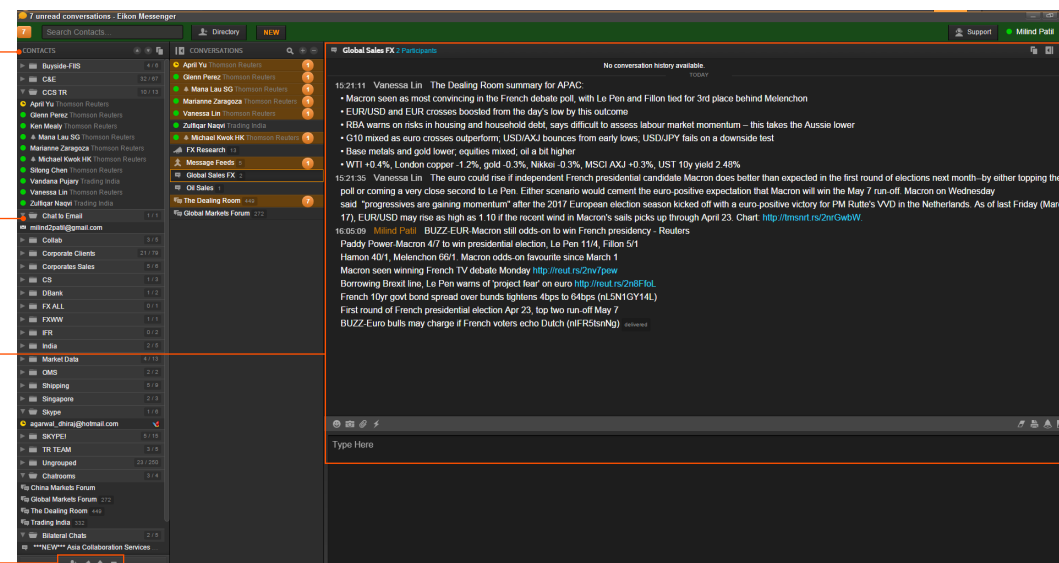


Begin typing here to search the directory or your contacts.

Right-click a contact name to view their profile, or double-click to start a conversation.

View active conversations in this area.

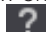
Use these buttons to add a contact, create a group or send a blast.



Messenger is also a venue for chats and forums. Check out the weekly Global Markets Forum, where you can get commentary from leading Reuters journalists.

Visit <http://online.thomsonreuters.com/trading/gmf/>

**Tip:** Messenger is enhanced every month with new features.

To find out about new enhancements, don't forget to check the **What's New** page frequently. Just click  in the top right of your toolbar.

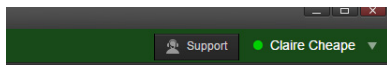
For eLearning, type **Training** into the Eikon Search bar, select **Training for Eikon**, choose **Getting Started**, select **Collaborating** and click **Get the Most out of Messenger**.

For more help, press **F1** when in the Messenger app.



## II. Contact Customer Support for help

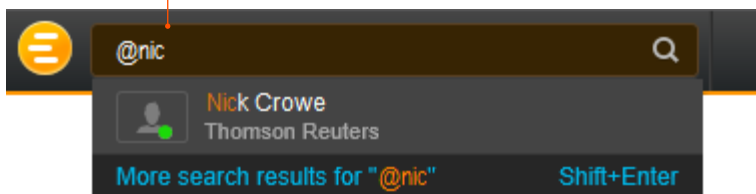
If you need help, you can contact Refinitiv Customer Support anytime from Messenger. Just click the **Support** button next to your name.



## III. Send messages directly from the Search box

You can send a quick message to any of your contacts (including Customer Support) without opening Messenger.

1. Just type @ and your contact's name in the Search box ...



2. ... then type your message and press **Enter**.



**Tip:** You can also write to chat rooms and groups you create in your list of contacts.

## IV. Search the Directory, view profiles and build your network

Messenger gives access to a global financial services directory for the combined Eikon and Markit Collaboration Services networks. This is the financial services industry's first open, cross-network directory. It enables users across the industry – including those on internal networks – to find and communicate with each other safely and compliantly.

Over 300,000 users are now accessible across the combined Eikon and Markit networks.

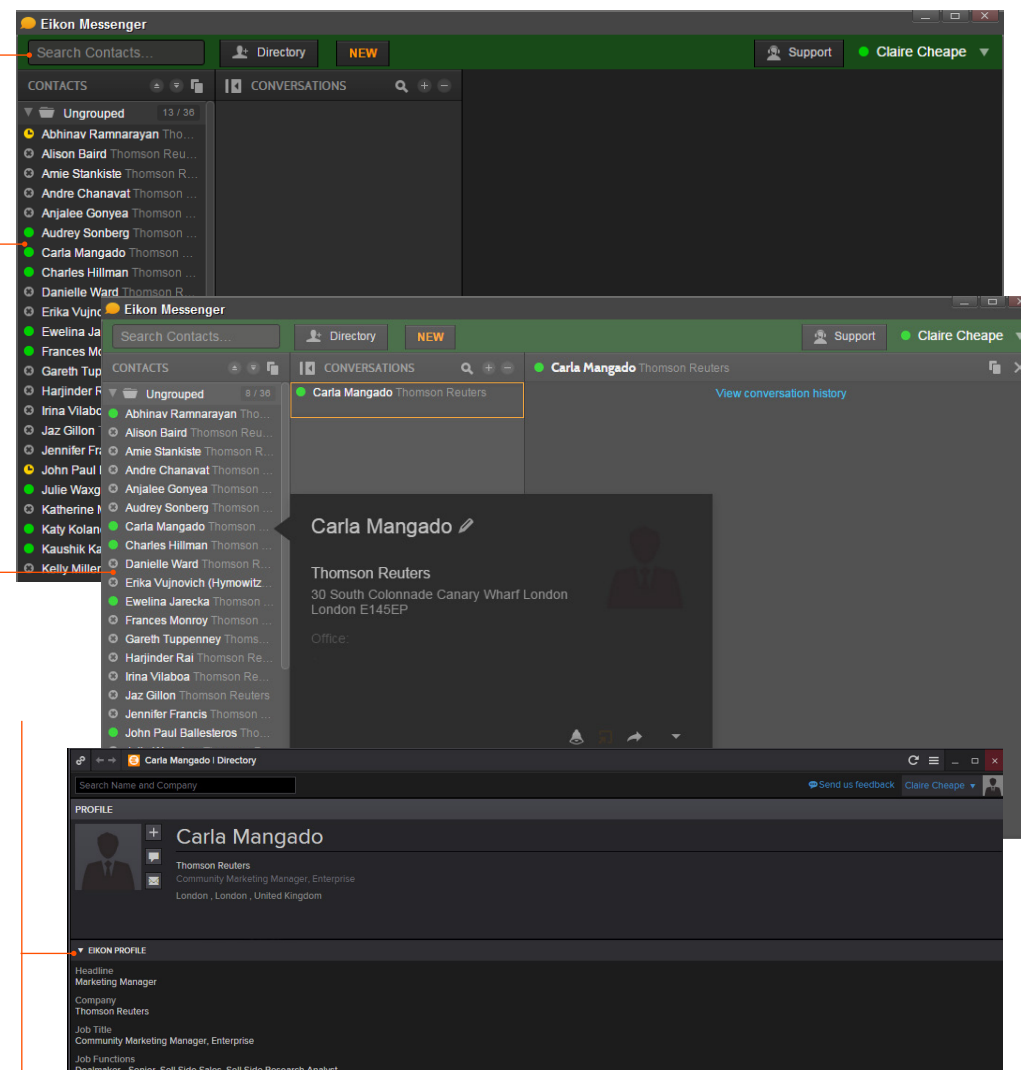
1. In Messenger, begin typing to search for a person or company.

2. Right-click a name to view more details.

3. Click **Add to My Contacts** or **View Profile**.

4. On the profile page:

- See the person's profile and contact details
- Send a message via Messenger or email
  - Add your own personal notes (not visible to other users)
  - View related contacts



# Eikon – Microsoft Office

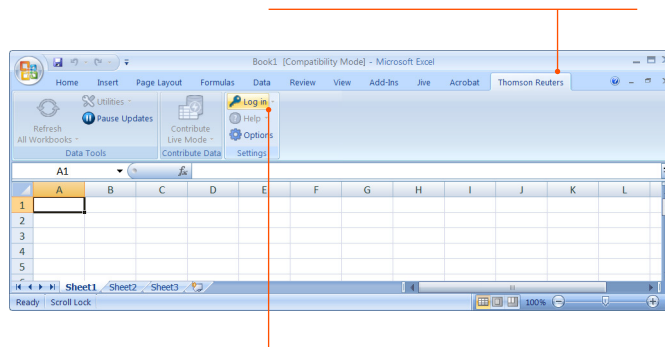
## I. Discover Eikon – Microsoft Office

Eikon – Microsoft Office, an integral part of Eikon, is a self-installing Microsoft Excel add-in. With it, you can:

- Retrieve real-time, historical and fundamental data by using the Formula Builder or the In-Cell Builder
- Analyze equities using the integrated Screener
- Build charts with your financial data in your worksheets for market analyses
- Access and customize advanced templates provided by Refinitiv
- Build lists and portfolios, and access those created in Eikon Desktop
- Export and link Excel data and charts to documents or presentations in Word or PowerPoint®
- Create presentations and documents customized to your company's own visual identity

## II. Log into Eikon – Microsoft Office

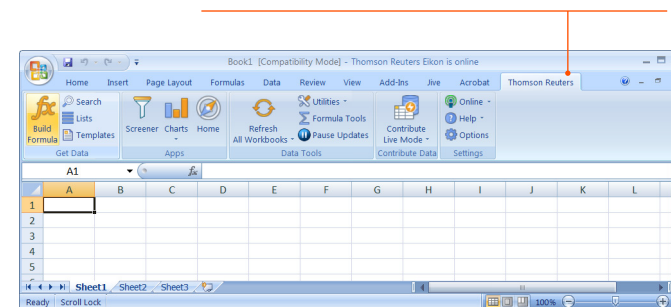
1. Start Microsoft Excel.
2. Click the Refinitiv tab to open the Eikon menu.



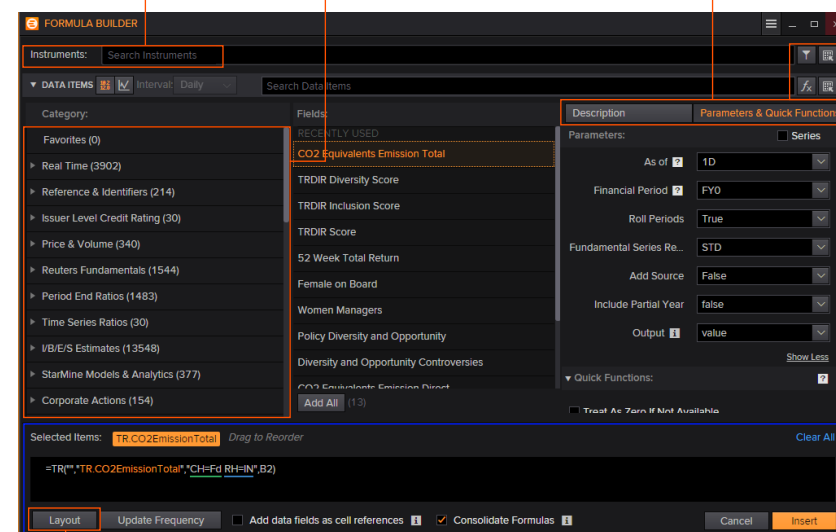
3. Click **Log in** and type your Eikon credentials if prompted.

## III. Use the Formula Builder to retrieve Refinitiv data

1. Select a blank cell on your worksheet, then click **Build Formula** on the **Refinitiv** tab.



2. Enter instruments with the help of Autosuggest.
3. Add data items rapidly with the help of Autosuggest. Or, select the category first, and then select the data items.
4. Specify parameters. Use Quick Functions for advanced analytics on real-time data.

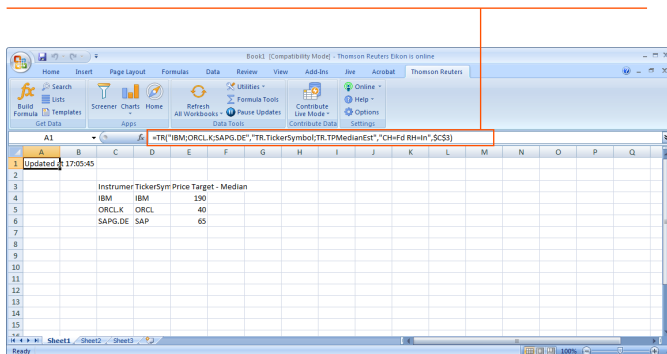


5. Set the layout, header, footers, date-display, etc.
6. Review the formula, if required select **Consolidate Formulas**, then click **insert**.

For eLearning, type **Training** into the Eikon Search bar, select **Training for Eikon**, choose **Eikon – Microsoft Office** for a full list of training guides.

The worksheet embeds the new formula in the cell you selected, and retrieves the related data.

In this example, the **TR function** is used. To find out more about this powerful and versatile function, see [bit.ly/EikonTRfunctions](https://bit.ly/EikonTRfunctions)



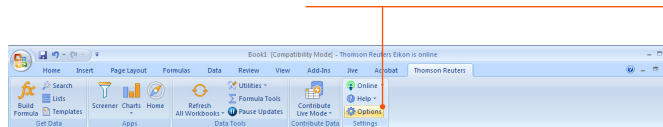
**Tip:** You can drag and drop from a Chart, Quote or Monitor into Excel.

#### IV. Enable Datastream, Deal Analytics, linking and presentation tools

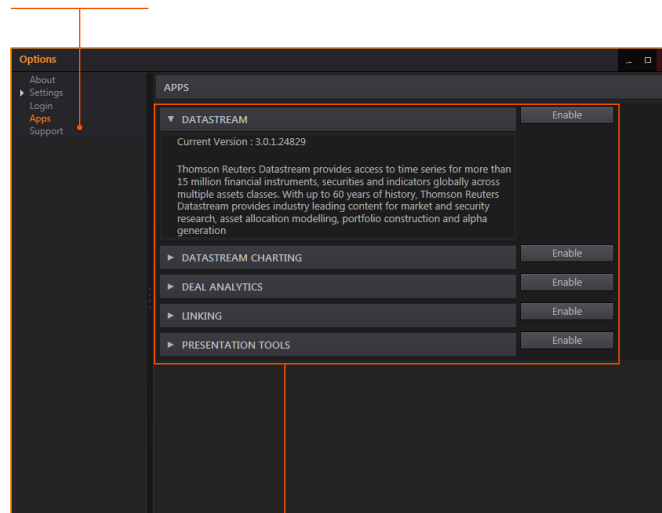
Eikon – Microsoft Office includes additional apps to enhance your productivity.

**Note:** You must be permissioned to enable these apps.

1. Click **Options** on the **Refinitiv** tab.



2. Open **Apps**.



3. Click to read about and enable the app(s) you require:

- Datastream®
- Datastream Charting
- Deal Analytics
- Linking

#### V. Use Adfin Analytics and other advanced features

Adfin Analytics is a set of powerful cross-market financial calculation libraries. The libraries are targeted for financial spreadsheet users and developers of financial applications. The libraries can be used in different environments, for example in Eikon – Microsoft Office.

**Tip:** In Microsoft Excel, go to **Formulas > Insert Function** to access the Adfin Analytics functions.

For more help, click the **Help** button in the **Refinitiv** tab on **Microsoft Excel**.

## Contact information

For help: Click **Support** in Eikon Messenger

For more information on training: Access the Training app

Or contact your Refinitiv representative.

iPhone, iPad, Apple and App Store are trademarks of Apple Inc., registered in the U.S. and other countries.

RE912608/5-19